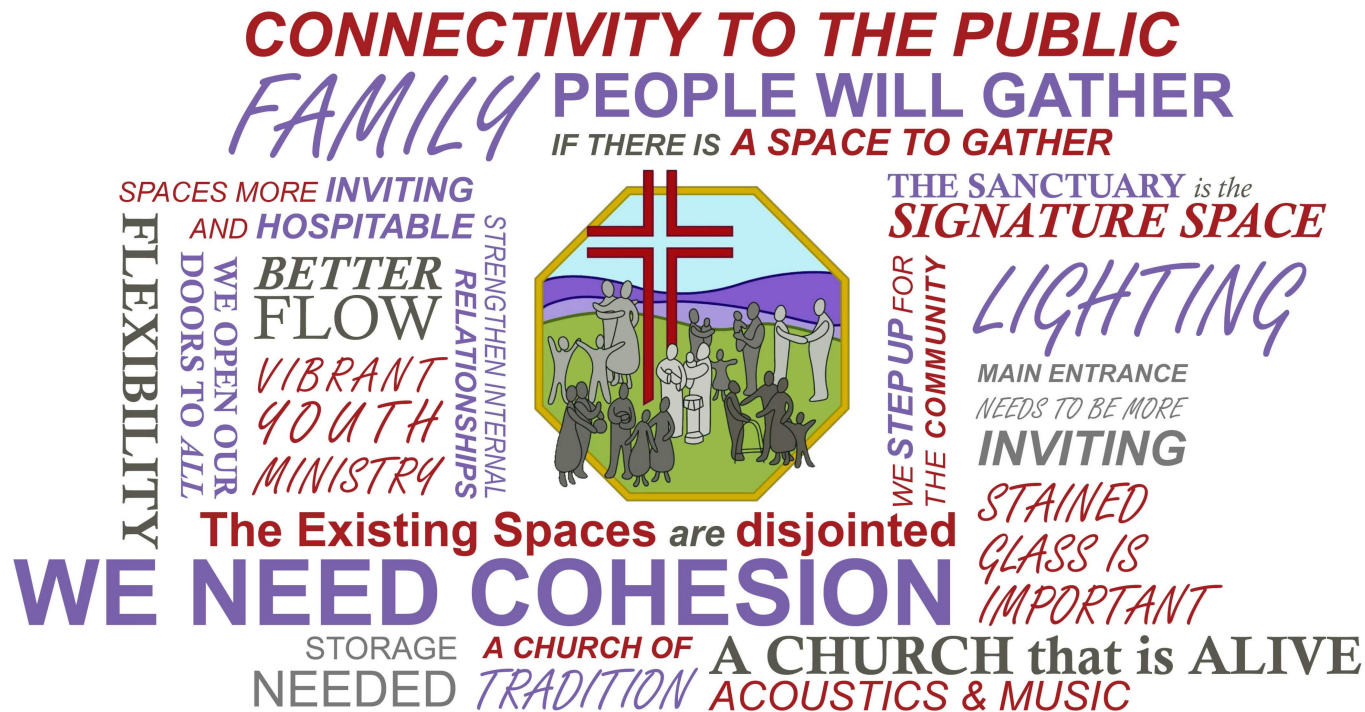


Imagine the Future

GRACE EVANGELICAL LUTHERAN CHURCH
WINCHESTER, VA

THE MASTER PLAN FOR RENOVATION OF FACILITIES – A LIVING DOCUMENT





Words and Phrases that inspired Master Plan Concepts

GELC Master Plan
Project Assessment: Word Cloud

The Master Plan concepts for Grace Evangelical Lutheran Church offered in the following slides are “visionary,” within a living document that may change in the Architects’ preparation of Construction Documents; or, during construction itself, depending on unforeseen challenges or opportunities that may arise.

Illustrations of furnishings, finishes, equipment, and lighting are provided by the architects for demonstration purposes only.

Proposed new entry steps to Sanctuary



View of proposed and enlarged Narthex. Artwork, flooring, lighting and finishes are not approved selections.



Proposed Gathering Hall in A&E Building with connection to the GMOC Assembly Hall.



Proposed View of the GMOC Assembly Hall with new Kitchen in the far right corner.



View of new stairs ascending to second floor of the A&E Building into new lounge, archive display outside new chapel.



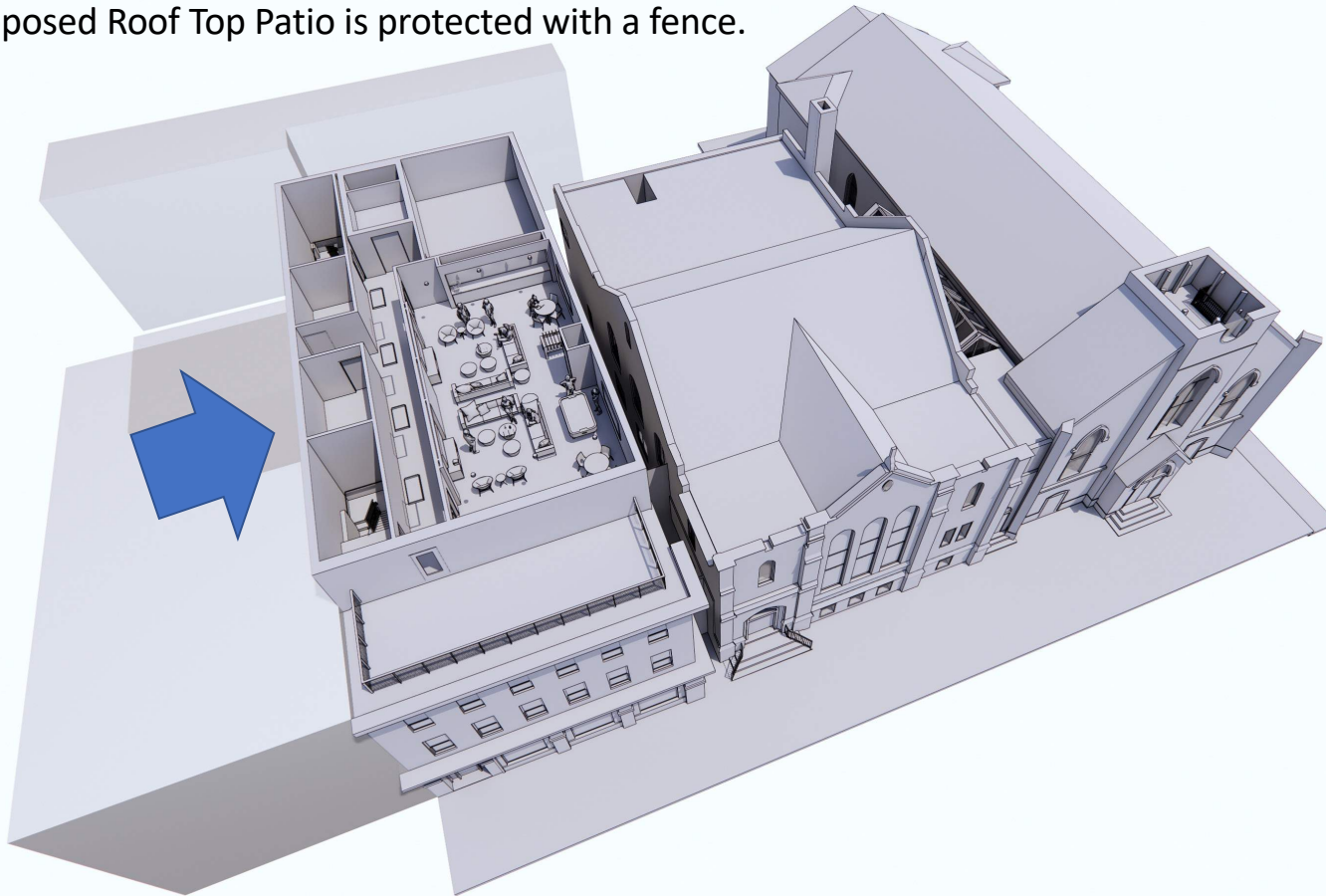
Different view of lounge and archival display, illustrating stained glass windows fronting Boscawen Street.



Proposed Chapel, Second Floor of A&E. Furnishings, flooring, liturgical appointments & lighting have not been selected



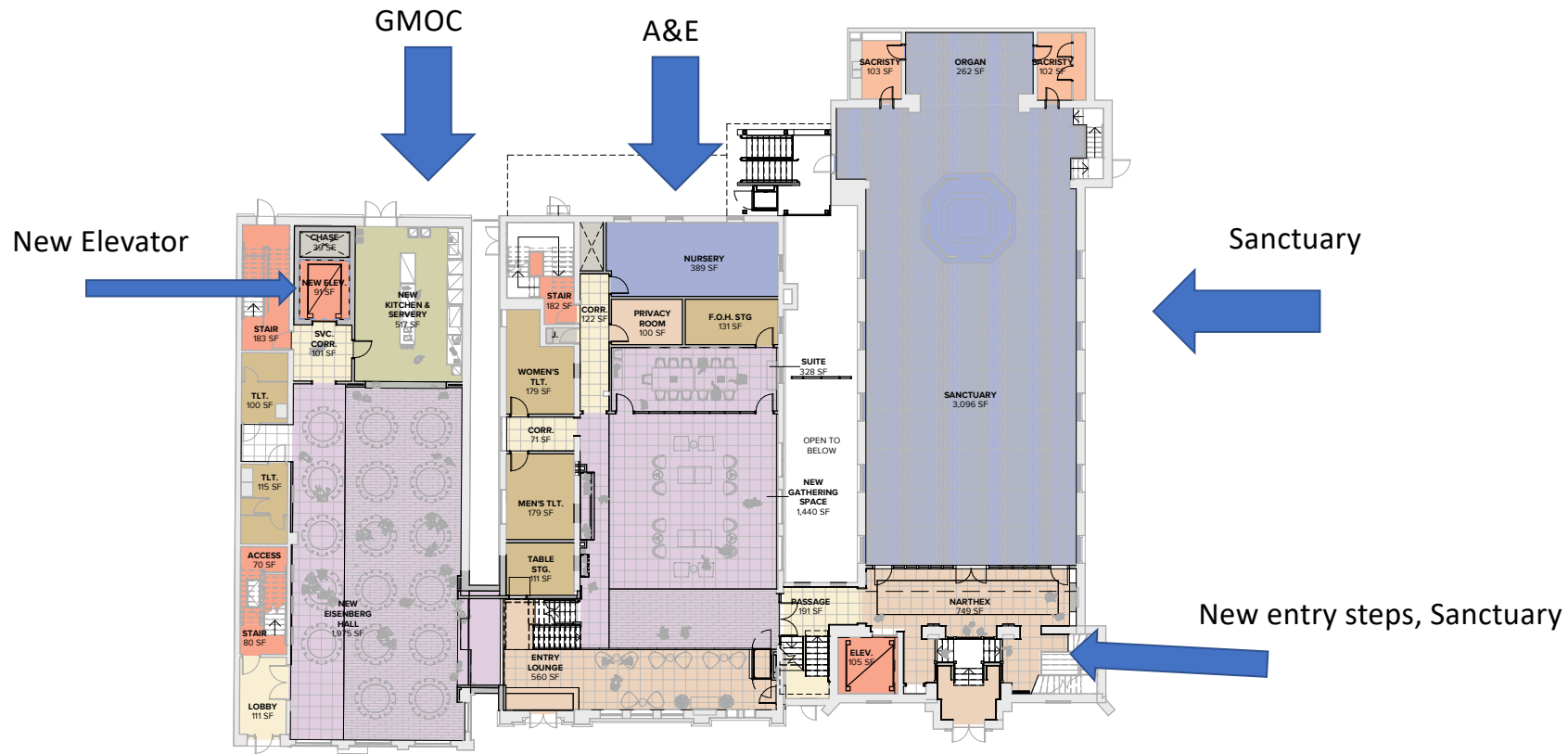
This three-dimension rendering illustrates the partial 4th floor of the GMOC (Youth Center) with outdoor patio.
Note: Proposed Roof Top Patio is protected with a fence.



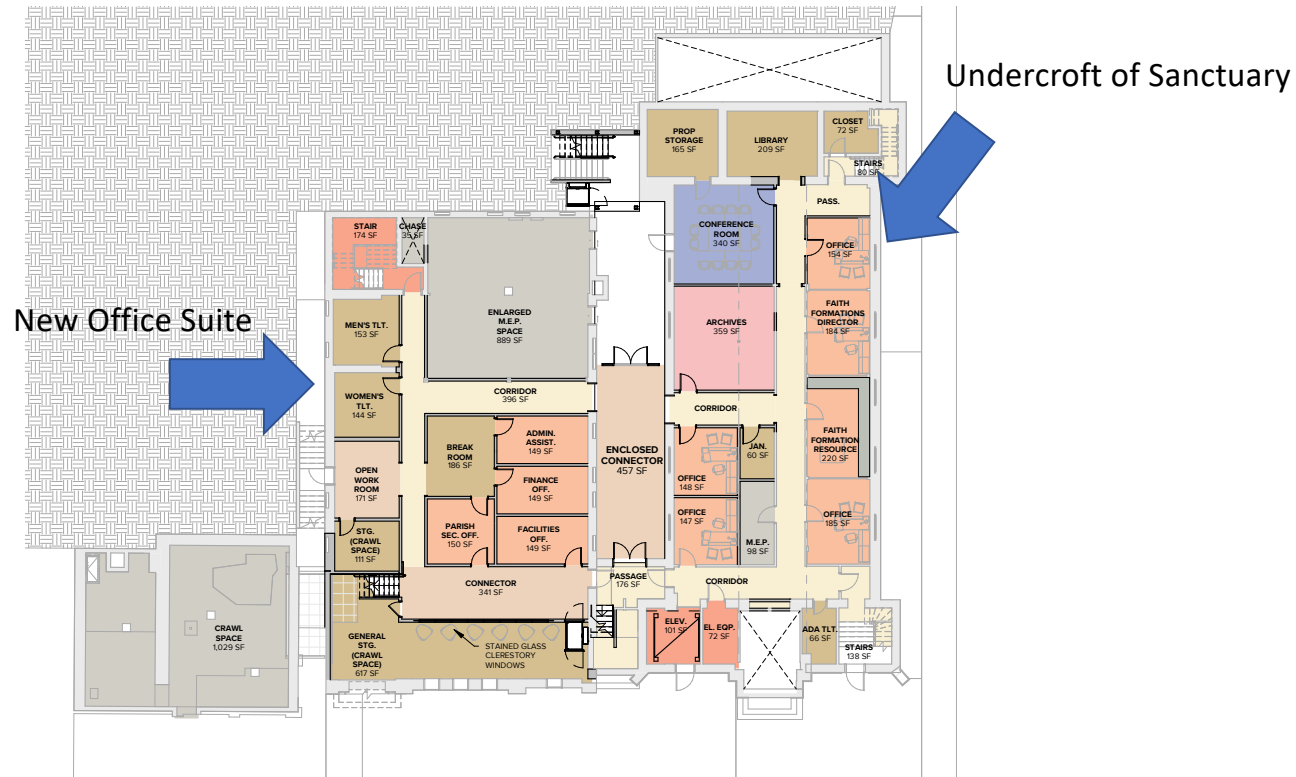


Connector, utilizing space between Sanctuary and A&E Building – View from current coatroom.

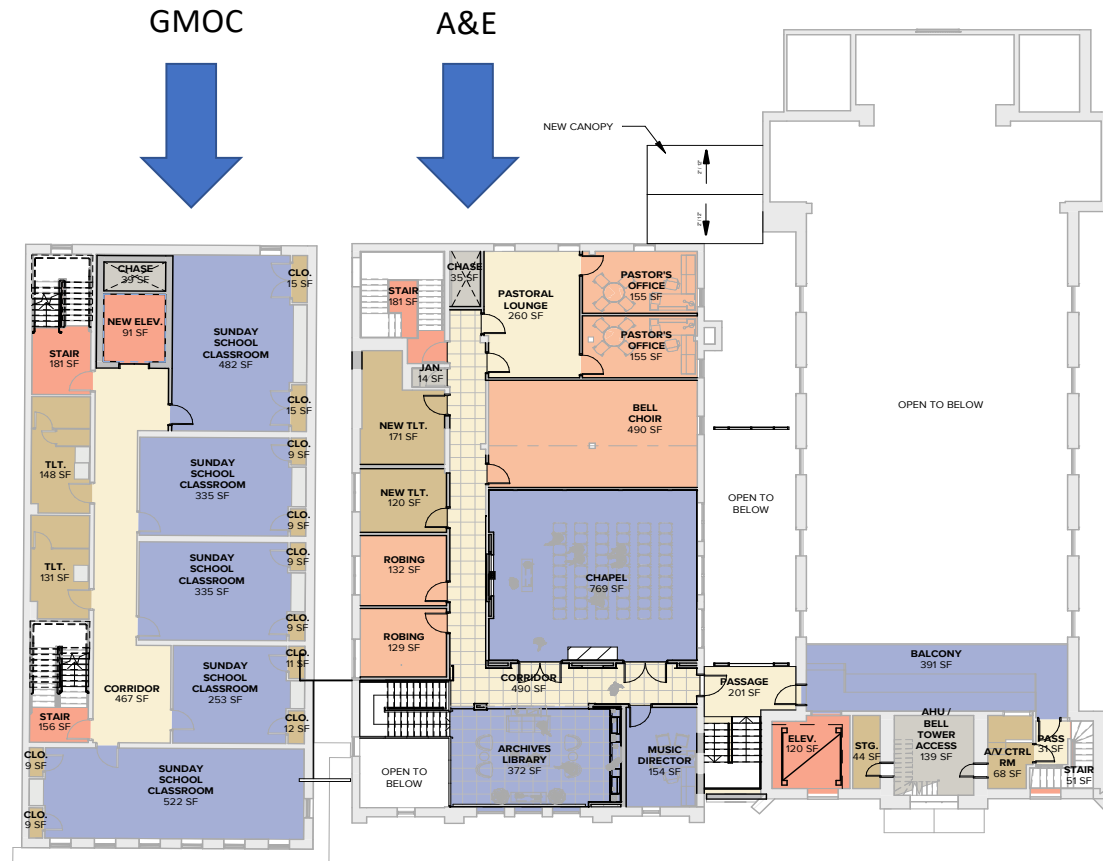
This view illustrates the proposed indoor steps to the sanctuary; Gathering Hall adjacent to the sanctuary (current church offices) the first floor of the GMOC with new kitchen and location of new elevator.



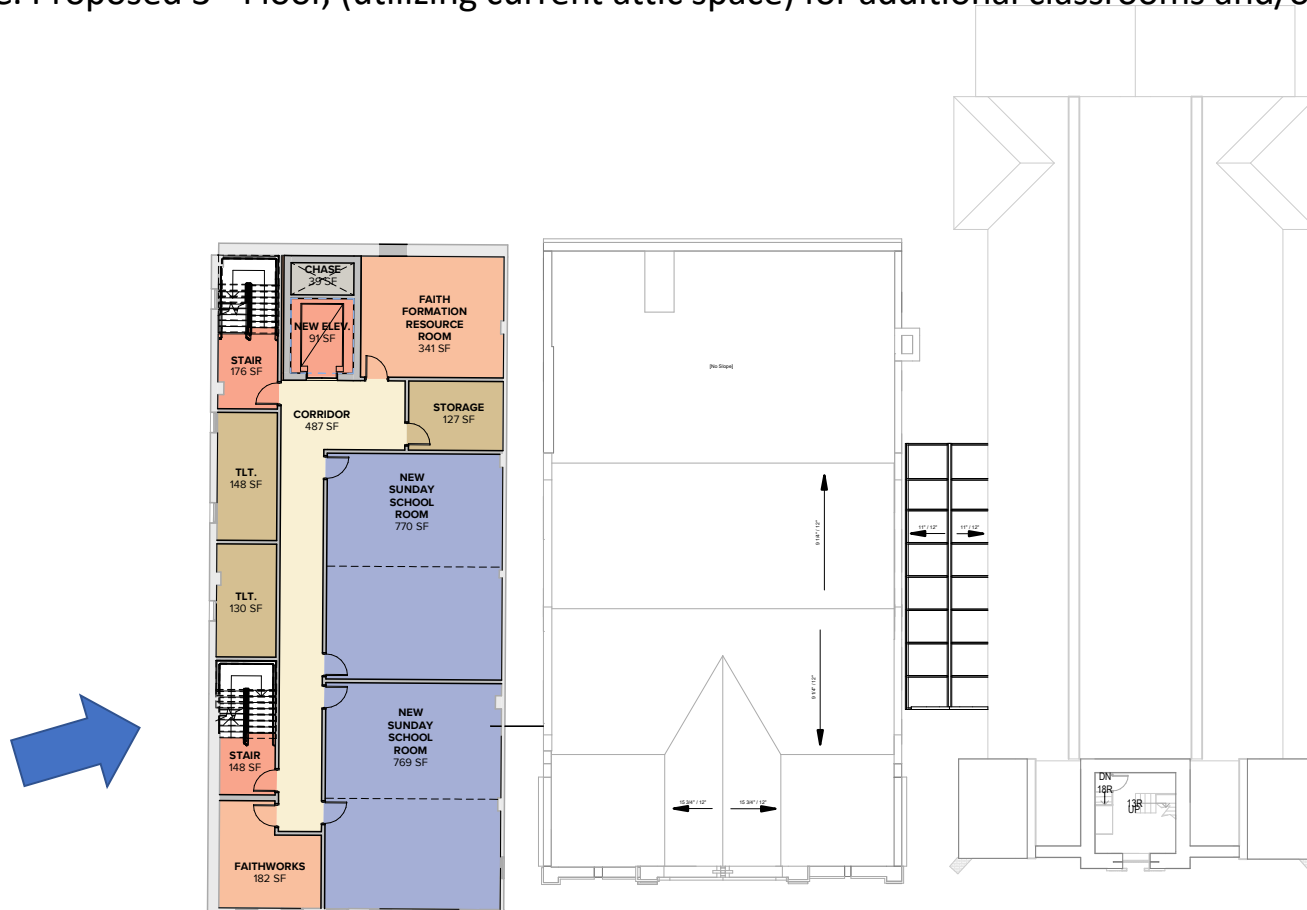
This view shows reconfigured space of current “Eisenberg Hall” for the new office suite; as well as reconfigured space in the undercroft of the Sanctuary.



This view shows the second floors of the GMOC (left) and A&E Building (center) with connection to the Sanctuary Balcony which offers elevator access to the second floor of the A&E Building.



GMOC: Proposed 3rd Floor, (utilizing current attic space) for additional classrooms and/or meeting spaces.



GMOC: Proposed Partial 4th Floor GMOC for Youth Center



Proposed Youth Room, for partial fourth floor of the GMOC. Furnishings, lighting, flooring have not been selected.



